



DTECH M3X

EXPEDITIONARY COMPUTE
AND NETWORKING PLATFORM



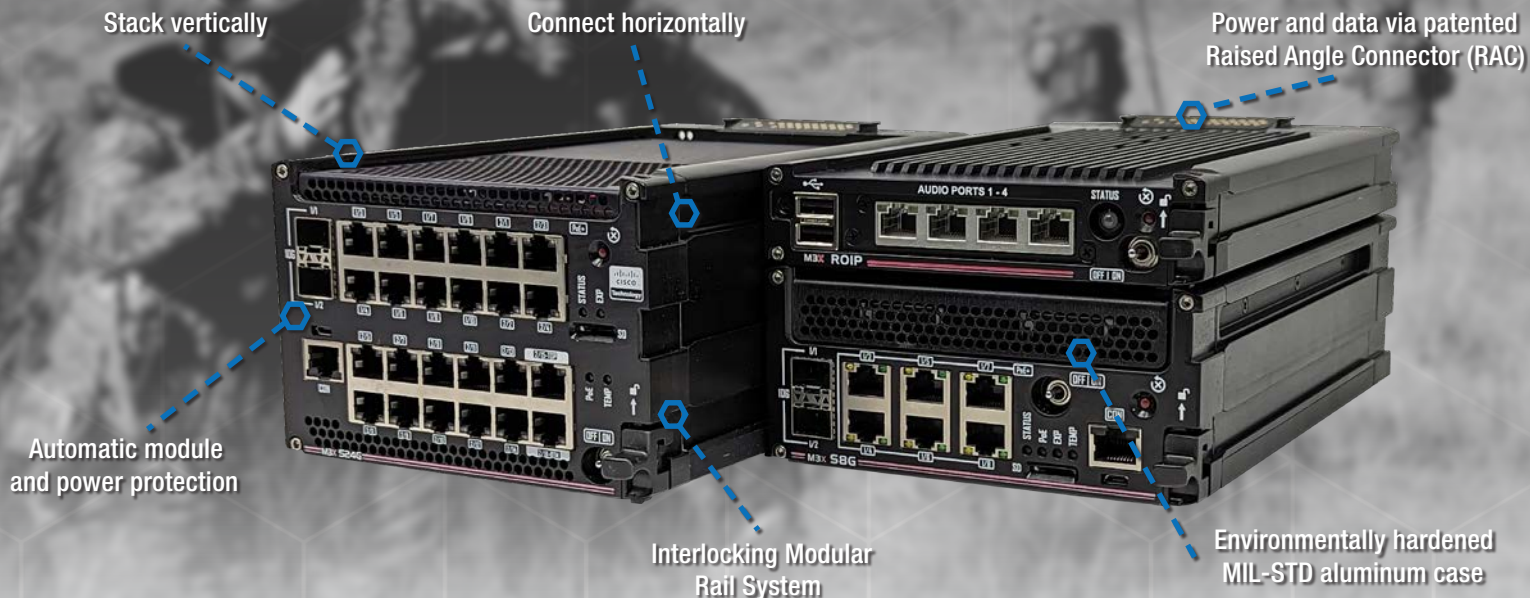


Photo Credit: Tech. Sgt. Emily Moon. THE APPEARANCE OF U.S. DEPARTMENT OF DEFENSE (DOD) VISUAL INFORMATION DOES NOT IMPLY OR CONSTITUTE DOD ENDORSEMENT.

10

Gbps
Networking

20%

Smaller
in Size

16

Cores
Xeon Processing*

96_{Wh}

Battery Suitable for
Airline Carry-on



Deploy Fast

Compact size, automatic detection of modules and cable-less connections ensures mission readiness



Modular & Scalable

Industry-leading modularity and scalability for flexible processing, storage and networking at the edge



Cable-less Connection

Power and data via Raised Angle Connectors, removes the need for separate power and data cabling



Chassis-less Design

Modular Rail System removes the need for a chassis and increases flexibility in system configuration



Smart Battery Power

Power management & battery backup make the M3X ideal for power-constrained environments



Built Tough

Hardened aluminum case certified to meet MIL-STD, CE and RoHS for deployments around the world

M3X-APP

High performance Xeon D server with 128 GB RAM and a single 7 mm / 2.5" Solid-State Drive (SSD) ensures the M3X-APP is more than capable of running server applications, virtual machines and wireless LAN controllers at the tactical edge.



Module	M3X-APP
Dimensions	
Length (in / cm)	8.90 / 22.60
Width (in / cm)	5.75 / 14.60
Height (in / cm)	2.5 / 6.35
Weight (lbs / kgs)	5.05 / 2.29
Power Input	10-30 VDC Wide Range
Power Output	10-30 VDC Rear I/O
PoE	30W with full PoE+
Number of Ports	5 x GE Ports (2 x RJ45 PoE+ Front (1 is MGMT), 1x RJ45 PoE+ Rear, 1 Top RAC, 1 Bottom RAC) 2 x 10GE Ports (2 x RJ45 Front)
Ancillary	1 x RJ45 Console Port Rear 2 x USB 3.0 Ports 1 x VGA Port
Processor	Intel Xeon Processor, 12 or 16 Cores
RAM	128 GB
Storage	7 mm/2.5" SSD
Operating / Storage Temperature (°F/°C)	Operating: 32 to 140 / 0 to 60 Storage: -4 to 185 / -20 to 70
Designed to Meet Certifications	MIL-STD-810 and MIL-STD-461

M3X-BPS

Smart Battery Power Supply (BPS) supplies over 96 watt-hours of power to a vertical equipment stack. Multiple M3X-BPS modules can be placed anywhere in a stack and provide additional reserve battery power to support mission requirements.



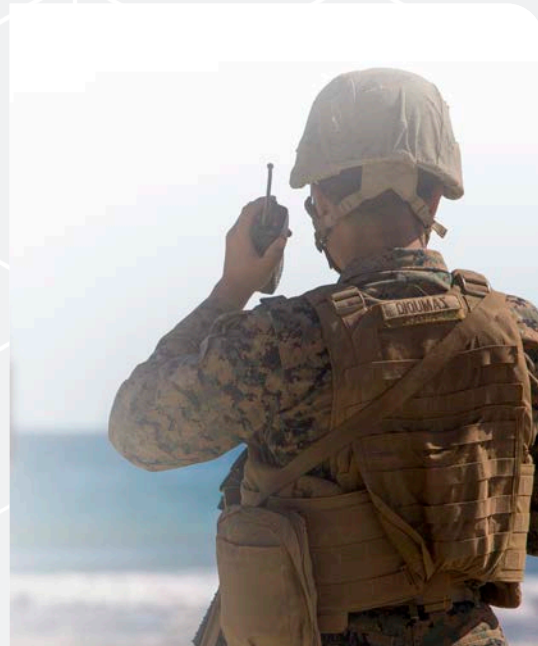
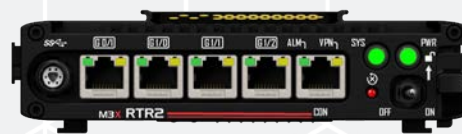
Module	M3X-BPS
Dimensions	
Length (in / cm)	8.90 / 22.60
Width (in / cm)	5.75 / 14.60
Height (in / cm)	1.25 / 3.18
Weight (lbs / kgs)	3.35 / 1.51
Power Input	10-30 VDC Wide Range
Power Output	8A Through RAC
PoE	N/A
Number of Ports	N/A
Ancillary	1 x USB 3.0 (power only)
Processor	N/A
RAM	N/A
Storage	N/A
Operating / Storage Temperature (°F/°C)	Operating: 32 to 140 / 0 to 60 Storage: -4 to 185 / -20 to 70
Designed to Meet Certifications	MIL-STD-810 and MIL-STD-461



M3X-RTR2

Based on the trusted Cisco ESR-6300, the M3X-RTR2 module provides a full Gigabit Ethernet (GE) router featuring 2 x GE WAN PoE Ethernet ports and 4 x PoE GE layer 2 switch ports. The module supports the Cisco Command Line Interface and has up to 32 GB of removal storage.

Module	M3X-RTR2
Dimensions	
Length (in / cm)	8.90 / 22.60
Width (in / cm)	5.75 / 14.60
Height (in / cm)	1.25 / 3.18
Weight (lbs / kgs)	3.00 / 1.36
Power Input	10-30 VDC Wide Range
Power Output	10-30 VDC Rear I/O
PoE	Up to 90W with full PoE+*
Number of Ports	2 x GE WAN Ports (1 x RJ45 PoE+ Front, 1 x RJ45 PoE+ Rear / RAC) 4 x GE LAN Ports (3 x RJ45 PoE+ Front, 1 x RJ45 PoE+ Rear / RAC)
Ancillary	1 x RJ45 Console Port 1 x USB via Fischer (Minimax)
Processor	Cisco ESR6300
RAM	4 GB DDR4 Memory
Storage	4 GB eMMC Flash
Operating / Storage Temperature (°F/°C)	Operating: 32 to 140 / 0 to 60 Storage: -4 to 185 / -20 to 70
Designed to Meet Certifications	MIL-STD-810 and MIL-STD-461



M3X-RoIP

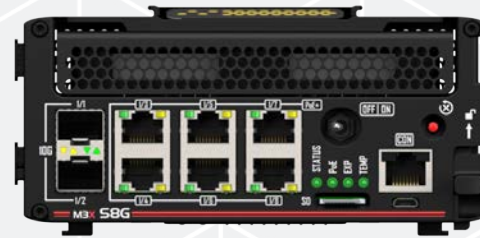
Based on the popular Vocality RoIP, the M3X-RoIP connects Land Mobile Radios (LMR) to IP networks. A wide range of radio types can be connected to the M3X-RoIP allowing for cross-banding of different radio brands, frequencies, and technologies into a single unified point-to-point radio network for connection to common radio dispatch solutions.



Module	M3X-RoIP
Dimensions	
Length (in / cm)	8.90 / 22.60
Width (in / cm)	5.75 / 14.60
Height (in / cm)	1.25 / 3.18
Weight (lbs / kgs)	2.8 / 1.3
Power Input	10-30 VDC Wide Range
Power Output	10-30 VDC Rear I/O
Number of Ports	4 x 8-way RJ45 Analog Radio Ports 2 x USB 2.0 Type A (RoIP connect, LTE and Wi-Fi devices) 2 x RJ45 ethernet shared with RAC (raised angle connectors) when stacked
Operating / Storage Temperature (°F/°C)	Operating: 32 to 140 / 0 to 60 Storage: -4 to 185 / -20 to 85
Designed to Meet Certifications	MIL-STD-461, MIL-STD-810

M3X-S8G

The M3X-S8G switch provides 8 x 1 GE POE ports and 2 x 10 GE SFP+ ports utilizing the Cisco ESS3300 embedded switch.



Module	M3X-S8G
Dimensions	
Length (in / cm)	8.90 / 22.60
Width (in / cm)	5.75 / 14.60
Height (in / cm)	2.5 / 6.35
Weight (lbs / kgs)	4.51 / 2.05
Power Input	10-30 VDC Wide Range
Power Output	10-30 VDC Rear I/O
PoE	120W with full PoE+
Number of Ports	8 x GE Ports (6 x RJ45 PoE+ Front 2 x RJ45 PoE+ Rear / RAC) 2 x 10 GE Ports (2x SFP Front)
Ancillary	1 x RJ45 Console Port 1 x Micro USB Console Port 1 x MicroSD Card Slot
Processor	Cisco ESS3300
RAM	4 GB DDR4 Memory
Storage	Removable MicroSD Card 4 GB eMMC Flash
Operating / Storage Temperature (°F/°C)	Operating: 32 to 140 / 0 to 60 Storage: -4 to 185 / -20 to 70
Designed to Meet Certifications	MIL-STD-810 and MIL-STD-461



M3X-S24G

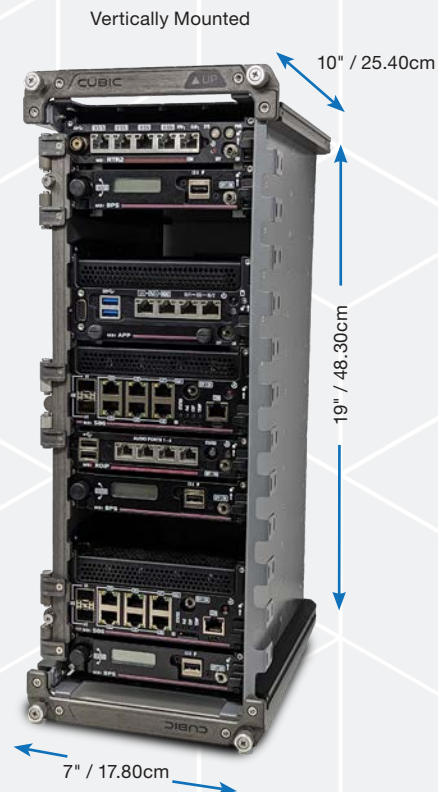
Powered by an embedded Cisco ESS3300 switch, the M3X-S24G provides a 24 x GE port switch plus 2 x 10 GE SFP+ ports.

Module	M3X-S8G
Dimensions	
Length (in / cm)	8.90 / 22.60
Width (in / cm)	5.75 / 14.60
Height (in / cm)	3.75 / 6.99
Weight (lbs / kgs)	4.51 / 2.05
Power Input	10-30 VDC Wide Range
Power Output	10-30 VDC Rear I/O
PoE	120W with full PoE+
Number of Ports	8 x GE Ports (6 x RJ45 PoE+ Front, 2 x RJ45 PoE+ Rear / RAC), 2 x 10 GE Ports (2x SFP Front)
Ancillary	1 x RJ45 Console Port, 1 x Micro USB Console Port 1 x MicroSD Card Slot
Processor	Cisco ESS3300
RAM	4 GB DDR4 Memory
Storage	Removable MicroSD Card 4 GB eMMC Flash
Operating / Storage Temperature (°F/°C)	Operating: 32 to 140 / 0 to 60 Storage: -4 to 185 / -20 to 70
Designed to Meet Certifications	MIL-STD-810 and MIL-STD-461



M3X-RACK-L

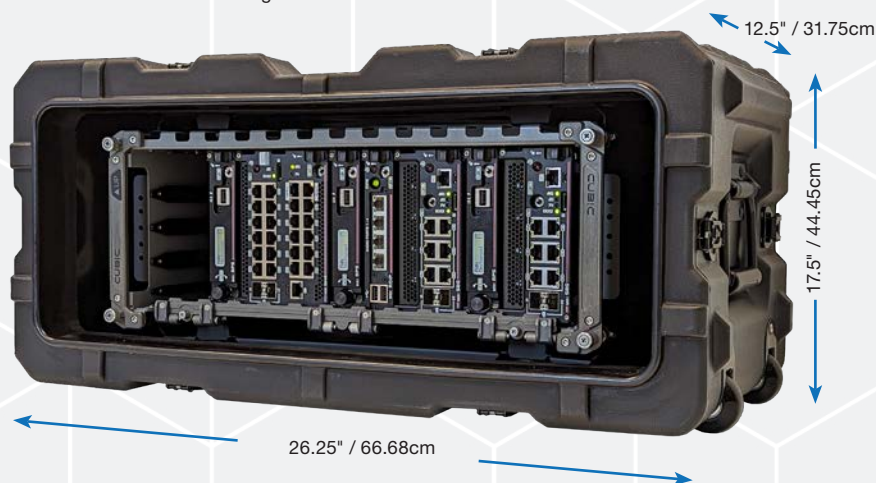
Made from tough but lightweight aluminum, the M3X 19-inch rack allows for transportation, operation, and storage of your M3X solution in industry-standard 19-inch racks and cases. Capable of supporting multiple module configurations with integrated cable management, the M3X rack ensures mission readiness wherever the mission takes you.



M3X-CASE-L

Drop tested to survive drops up to 5 feet and IP67-rated, the M3X rotational molded plastic case is designed for use with an M3X-RACK-L rack. The case includes integrated shock protection, a pressure relief valve, a low-profile carry handle, removable lids, and casters.

Weight - 37.3 lbs / 16.9 kg without the M3X-RACK-L or
47.8 lbs / 21.68 kg with M3X-RACK-L



M3X-MT Mounting Plates

The M3X-MT Mounting Plates enable third-party devices to be attached to the top of an M3X system stack. Several models are available, each designed to support specific third-party devices, including cellular routers, Radio over IP (RoIP) gateways, and country-specific encryption devices.

Product Name	Description
M3X-MT1-BA	Universal Mounting Plate, with hole patterns for third-party module connections, includes M3X mounting slides and lock mechanism.
M3X-MT2-BA	M3X Mounting Plate for Peplink Max BR. Includes M3X mounting slides, power cable and lock mechanism.
M3X-MT3-BA	M3X Mounting Plate for KG-175D. Includes M3X mounting slides and lock mechanism.
M3X-MT4-BA	M3X Mounting Plate for Vocality RoIP. Includes M3X mounting slides and lock mechanism.
M3X-MT5-BA	M3X Mounting Plate for KG-250X. Includes M3X mounting slides and lock mechanism.
M3X-MT6-BA	M3X Mounting Plate for KG-250XS. Includes M3X mounting slides and lock mechanism.
M3X-MT7-BA	M3X Mounting Plate & 24-inch Power Cable for Cradlepoint IBR900. Includes M3X mounting slides and lock mechanism.



M3X-MT4 Vocality RoIP Mount

POWER ACCESSORIES

A wide range of power accessories are available to connect directly to the modules or to an M3X system stack, these include desktop power supplies and military battery-compatible power solutions.



Passthrough Battery Charger and Cable



Desktop Power Supply

Product Name	Description
M3X-DPS	M3X Desktop Power Supply Kit (24 VDC out) - 160 W, 6.67 A
M3X-CHRG-12N	Passthrough battery charger and cable, 12V, for inline charging of BB-2590 lithium-ion rechargeable batteries and connection to an M3X module. 36 inches
CA-M3X-12VBATT-36	12V battery cable with strap, for connecting one BB-type battery to an M3X module, 36 inches
CA-M3X-12VBATT-2-36	12V battery cable with strap, for connecting up to two BB-type batteries to an M3X module, 36 inches
CA-M3X-12VBATT-4-36	12V battery cable with strap, for connecting up to Four BB-type batteries to an M3X module, 36 inches
CA-M3X-FSY-UNIV-8	"Y" power cable, allows DC in and DC out connections to a single M3X module. Eight inches



Cubic Defense
21580 Beaumeade Circle, Suite 230
Ashburn VA 20147
United States
t: +1 858-505-2445
e: ecn.sales@cubic.com

www.cubic.com/ecn

Photo Credits: Sgt. Michael J. MacLeod, 1st Brigade Combat Team, 82nd, Joseph Eddins, Staff Sgt. Joel Priester, Tech. Sgt. Emily Moon, Army Sgt. LaShia Patterson, Capt. Scott Kuhn, Petty Officer 1st Class Carlos Gomez, Mass Communication Specialist Seaman Kelsey L. Adams, Sgt. Branden Bourque, MassCommunication Specialist 1st Class Daniel Barker, Cpl. Scott Jenkins, Lance Cpl. Reine Whitaker, Sgt. Dustin D. Biven-75th Field Artillery Brigade, Lance Cpl. Kaleb Martin, U.S. Army Acquisition Support Center, Sgt. Branden Bourque, U.S. Army, U.S. Marines, U.S. Airforce, U.S. Navy, and U.S. Special Forces.

The appearance of U.S. Department of Defense (DoD) visual information does not imply or constitute DoD endorsement.

