

Connecting to the Device CON Port

NOTE: Hyperlinks are provided to take you to the place in the User's Guide, or another location, where you find more information on that particular subject.

To connect to the device CON port:

1. Connect the supplied Cisco console cable to the CON port on the module.
2. Connect to the other end to your computer in the COM1 port. **NOTE:** If you have a newer computer, you may need a USB to DB9 adapter. If you have added an adapter, you will need to find out which COM port is active on your computer. To find your active COM port follow the steps in the Finding the Active COM Port chapter.
3. Open your favorite terminal program (i.e., Hyperterminal, PuTTY, and SecureCRT). This example use [PuTTY](#).
4. Run PuTTY. The PuTTY Configuration dialog box displays.

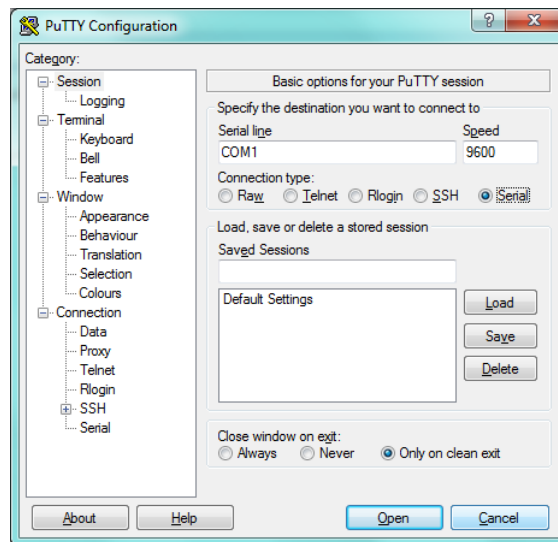


Figure 1: PuTTY Configuration CON Sessions Options

5. Do the following:
 - a) Ensure the **Serial** radio button is selected. **NOTE:** Default is SSH.
 - b) Select **Serial** found in the left pane.

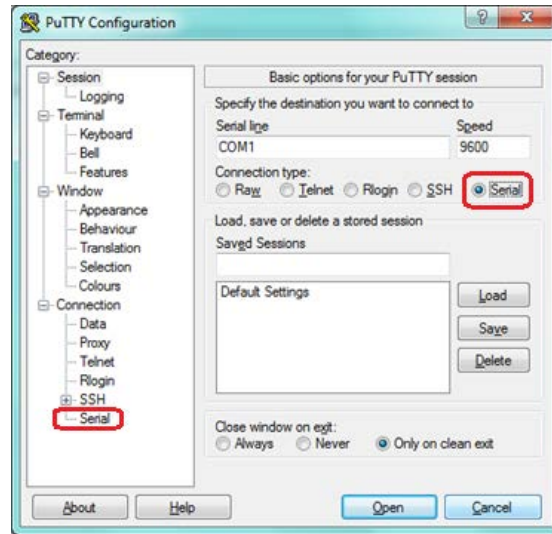


Figure 2: PuTTY Configuration CON Selections

The PuTTY Configuration (Options controlling local serial lines) dialog box displays.

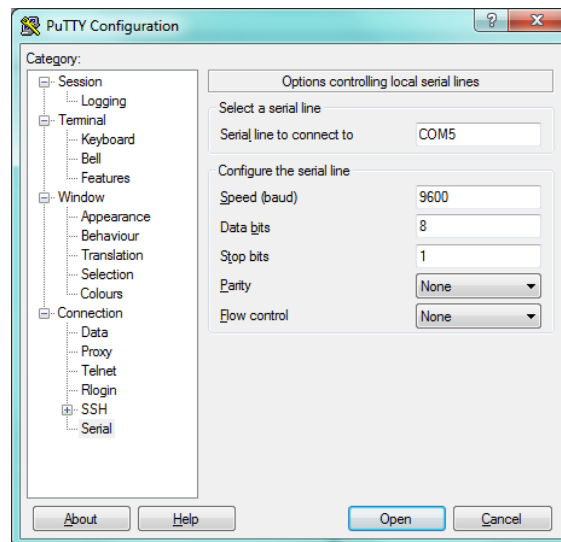


Figure 3: PuTTY Configuration CON Serial Lines

6. Do the following:
 - a) Enter the applicable Serial line to connect to. **NOTE:** Default COM1, COMx are discovered here.
 - b) Ensure Flow control is **None**.
 - c) Click **Open**.

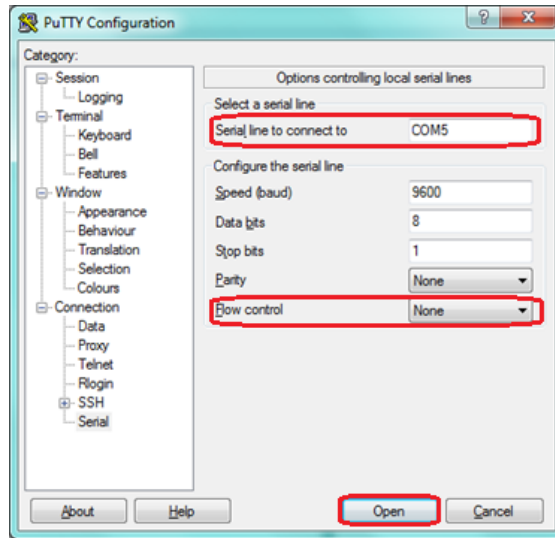


Figure 4: PuTTY Configuration CON Serial Line Selections

The applicable COMS port window displays.

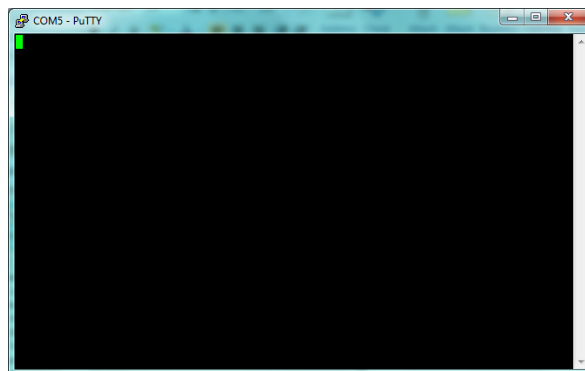


Figure 5: COMS Port Window

7. Press **Enter**. The following information is an example of what may display.

- M3-SE3 RTR CON:

Username :

- M3-SE3 SW CON:

Username :

- M3-SE-SW24 CONSOLE:

Would you like to enter the initial configuration dialog? [yes/no]:

NOTE: For modules that ship with Cisco’s default configuration, please refer to “Cisco Catalyst Switch” documentation for configuration settings.