

Finding the Active COM Port Number

To find the active COM port:

1. Type **Device Manager** in the Start box.

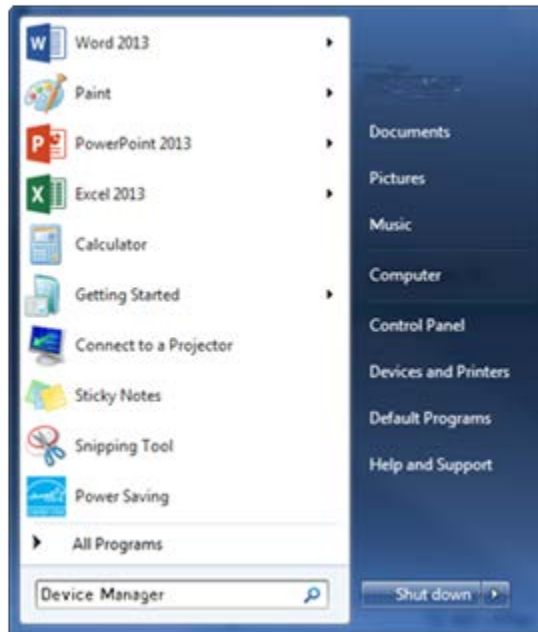


Figure 1: Start Window

The Control Panel window displays.

2. Select **Device Manager**.

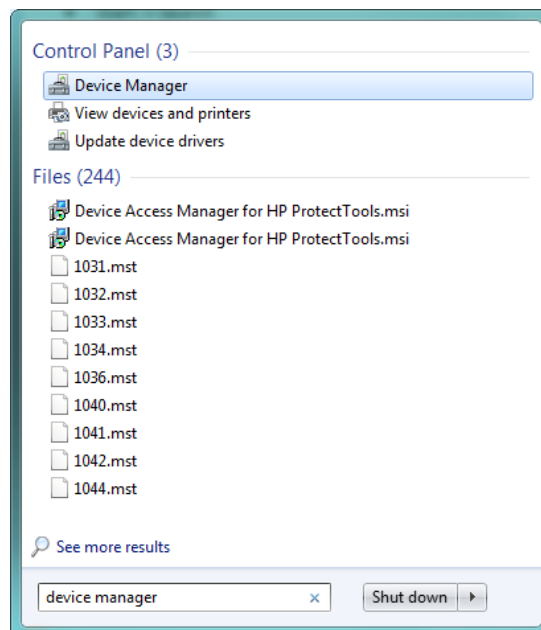


Figure 2: Control Panel Window

FINDING THE ACTIVE COM PORT

The Device Manager window displays.

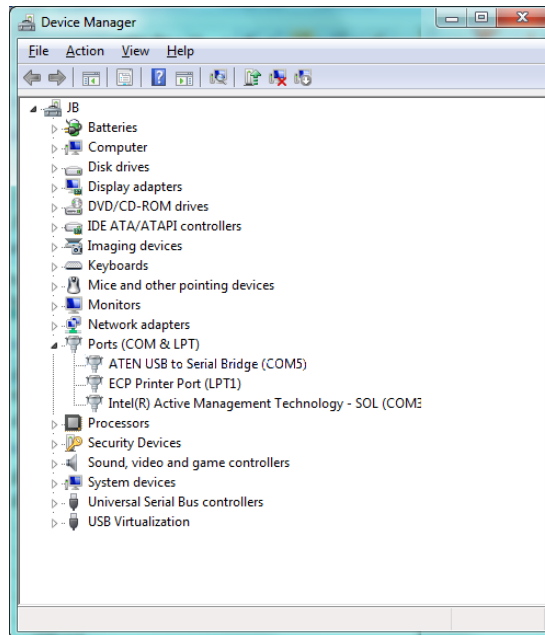


Figure 3: Device Manager Window

3. Expand Ports (COM & LPT).

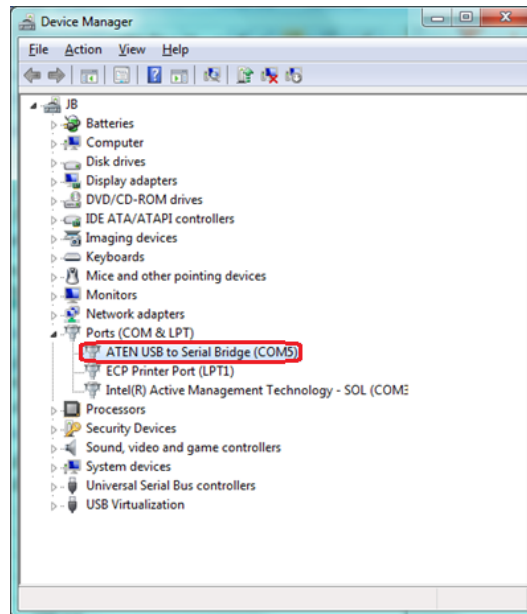


Figure 4: Ports (COM & LPT)

NOTE: The number that displays after the word COM, is the COM port number. In this example it is five (5). This is the number you will need when you begin the steps found in the Connecting to the Device CON Port chapter