

⊗ FasTIS NR Ticket Issuing System

FEATURES & BENEFITS

- Full UK timetable, fares and ticket product database
- High speed operation
- Supports customised keyboard
- Wide range of tendering including customer charter vouchers and warrants
- Support for different CCST printers
- Industry-standard audit printer
- Prestige Oyster™ card and ITSO compatibility ready for upgrade (option)
- Multi-standard contactless smart card interface (option)
- EMV level 2 chip & PIN reader
- Support for barcode scanner (option)
- Ability to retail non-travel products
- VAT handling
- Euro ready
- Flexible reporting
- Remote monitoring
- Full local operation from downloaded data, comms loss does not affect range of unreserved products available or timetable data
- Interface to Touchscreen (option)
- Supply of software system package (including contactless smart card reader/writer) to upgrade any existing ticket issuing system already installed (option)

FasTIS is Cubic's smart card enabled ticket issuing system, which delivers high speed processing of ticketing products in both magnetic and/or contactless smart card formats. Subject to agreement with Transport for London (TfL) and the provision of appropriate data interfaces, participation with Prestige scheme can be offered.

Cubic also offers full integration with ITSO standard smart card schemes. FasTIS can optionally interface with the National Rail reservation system (NRS) and ticket on departure schemes.



The performance of FasTIS at the ticket window is defined by the graphical user interface, which supports fully flexible ticketing and timetable enquiries and is capable of interfacing into the UK NRS network and/or other Internet-based ticket selling websites. FasTIS has a user-friendly RAPID key entry system to ensure that well-known products can be sold with minimal keystrokes and maximum speed.

The host computer connects to a standard TCP/IP network allowing communications to the required external services. The FasTIS licence includes the provision of RJIS data processed as required for the IPTIS engine.

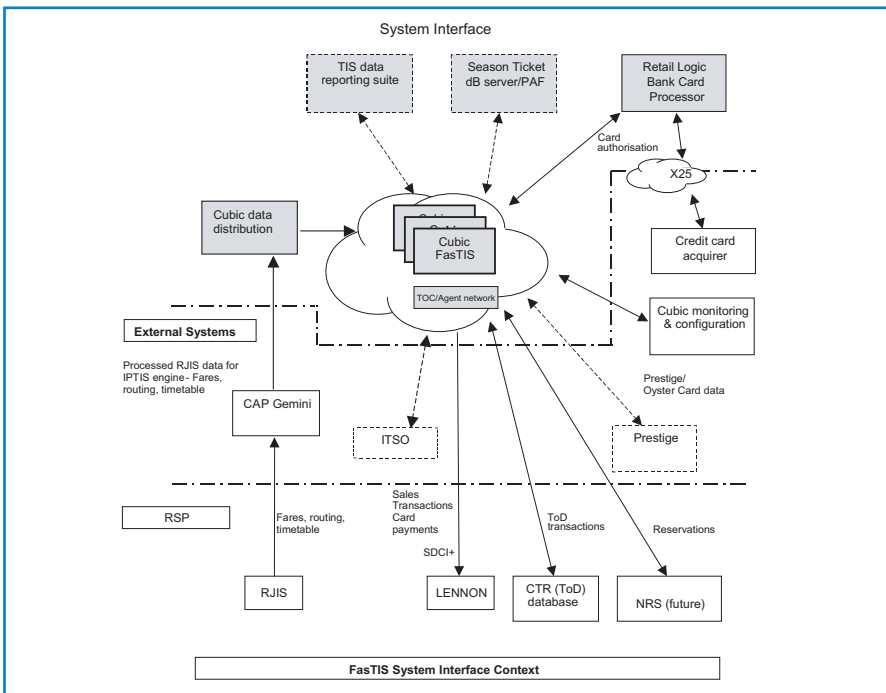
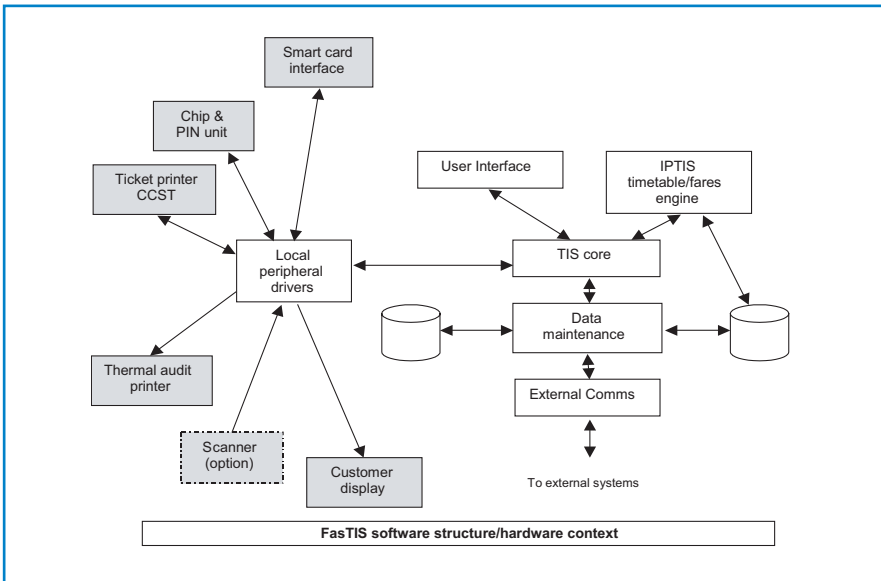
FasTIS is also integrated with the Retail Logic Solve/SE and Smartswitch products to fully support credit and debit card usage for both magnetic cards and EMV chip cards. The optional Season Ticket Database feature also brings access to the UK postcode file and electoral register to allow rapid entry and validation of customer data. This is achieved through integration of QAS Names software.

- Four Reasons** ⊗ Quality
to Choose Cubic ⊗ Reliability
for Your Fare ⊗ Innovation
Collection Needs ⊗ Customer Focus



FasTIS NR Ticket Issuing System

SPECIFICATIONS



Modern Design

- ③ The FasTIS system is based on the proven design used in over 300 stations on London Underground

Platforms

- ③ Windows® 2000
- ③ Windows® XP

Standard Features

- ③ Ticket Issuing Terminal
- ③ TFT Monitor
- ③ 2.4 GHz PC minimum
- ③ PC Keyboard
- ③ Newbury Data ND4020 printer (other options available)
- ③ Receipt Printer
- ③ Passenger Display
- ③ Chip & PIN Module

Optional Features

- ③ Oyster™/ITSO Interface Module
- ③ Touchscreen
- ③ Special keyboard
- ③ Receipt & cheque printer combined unit

Temperature Range

- ③ Storage: -10°C to +70°C
- ③ Operating: 0°C to +40°C

Humidity Range

- ③ Storage: 10% to 90% RH (non-condensing)
- ③ Operating: 12% to 97% RH

Electromagnetic & Safety

- ③ RTTE Directive 99/5/EC (for the RTD component)
- ③ EMC Directive 89/336/EEC
- ③ LVD Directive 73/23/EEC by application of the standards
- ③ EN50081-1 Generic Emissions - Residential, Commercial and Light Industrial
- ③ EN50082-1 Generic Immunity - Residential, Commercial and Light Industrial
- ③ BS EN60950-1 2002 Information Technology Equipment - Safety

Cubic Transportation Systems, Inc.
 World Headquarters
 5650 Kearny Mesa Road
 San Diego, CA 92111 USA
 +1-858-268-3100 • FAX +1-858-292-9987

Cubic Transportation Systems Limited
 European Headquarters
 AFC House, Honeycrock Lane
 Salfords, Redhill, Surrey, RH1 5LA UK
 +44-1737-782200 • FAX +44-1737-789759

Cubic Nordic
Branch of Cubic Transportation Systems Limited
 Herstedøstervej 9
 DK-2600, Glostrup, Denmark
 +45-43-43-3999 • FAX +45-43-43-3488

Cubic Transportation Systems (Deutschland) GmbH
 Am Hauptbahnhof 16
 D-60329, Frankfurt, Germany
 +49-69-264-864-0 • FAX +49-69-264-864-29

Cubic Transportation Systems (Australia) Pty Limited
 3/11 Palmer Place
 Murarrie, QLD, 4078 Australia
 +61-7-3907-3900 • FAX +61-7-3907-3986